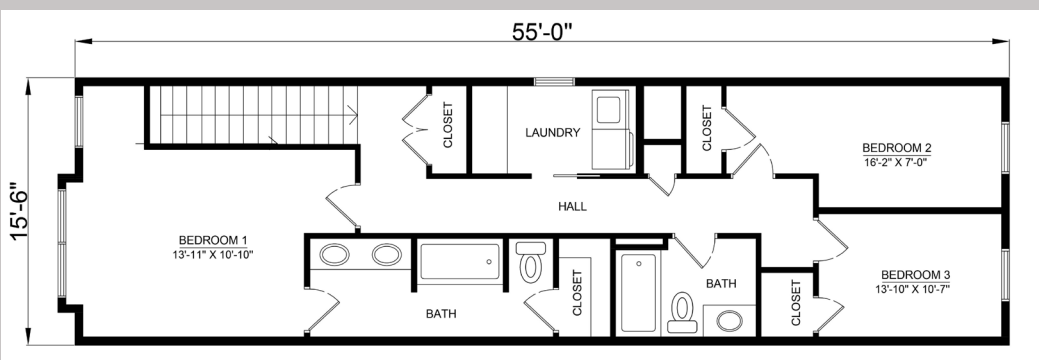
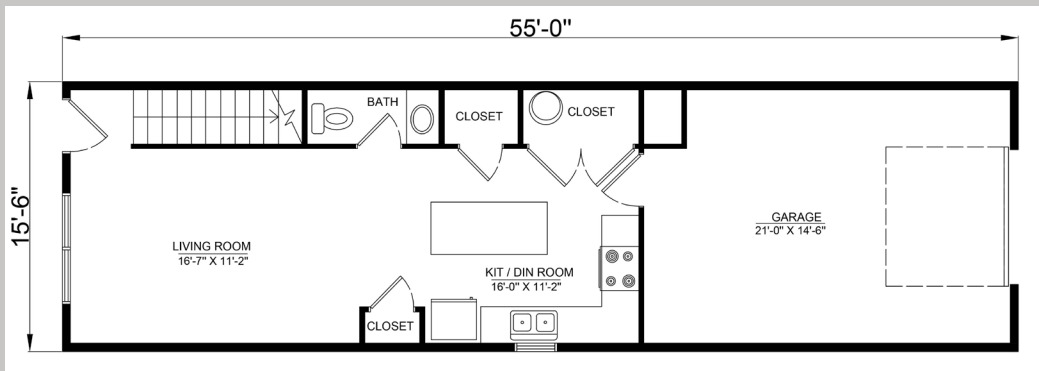


PRE-DESIGNED SINGLE FAMILY

PINYON SINGLE-FAMILY



Dimensions: 55'-0" x 15'-6"
Square Feet: 1705
Price: Sales@Volumod.com for pricing
Stories: 2
Bedrooms: 3
Bathrooms: 3
Total Modules: 2



Perfect for Urban Infill projects, the Pinyon model fits a typical city lot. Beautiful designer-chosen finishes and features abound in this three-bedroom single-family home. The main floor has open-concept living with a large kitchen peninsula, appliances included and ample lighting. Upstairs is a spacious master bedroom with en suite bath, laundry, and two additional bedrooms that share a hall full bathroom.